

A reflection of our wonderful Spring 2017!

Our Mission:

Growing Places provides early education programs that foster the development of the whole child.

Our Programs:

Lee Early Childhood Site

6 weeks ~ 6 years
56 Pinkham Road
(603)868.1160

Director: Michelle Guthrie

Teachers: Lindsey Colbath
Tara Connolly
Katie Gray
Celeste Hume
Shane Krafton
Melissa Parsell
Greta Russell
Julie Scadova

Durham Early Childhood Site

2~6 years
60 Stafford Ave
(603)868.5674

Director: Hillary Hughes

Teachers: Becca Kelly
Emily Kluun
Ashley Studer

School Age Programs

5~12 years
(603)969.8677

Moharimet Elementary School

Director: Francesca Trial
Asst. Program Dir.: Lindsay Michel

TimberNook Programs

5~12 years
Moharimet Elementary School
Director/Provider: Sarah Hastings
Providers: Kate Milne/Ashley Studer

Program Administrator

Sarah Nason

Director of Outreach/Dev.

Wendy Rousseau

Executive Director

Deb Cuddahy

Board of Directors

Jessica Starkey, President
Kathryn Mone, Vice President
Chris Regan, Treasurer
Amy Leone, Secretary
Brooke Fleit

Strength in Community

"Individually, we are one drop. Together, we are an ocean" Ryunosuke Satoro

On Thursday May 18th, Growing Places was embraced and supported by community members at our 15th annual fundraiser in the beautiful home of former State Senator Katherine Wells Wheeler and her husband Douglas Wheeler.

Year after year many familiar and new faces join together in an uplifting and inspiring evening filled with reflection and thoughtful discussion about the importance of supporting early childhood education. Each year we are amazed at how much of an impact Growing Places has on our community and we are thankful for our many supporters who champion our mission and philosophy.



Doug & Katie Wheeler

Not only do the Wheelers open up their home and hearts to Growing Places, they continue to be a sustainable monthly donor year after year. One hundred percent of their donations support our classroom programs!

Another valued community member since 1998 is Mr. Thomas Haas. He graciously gifts a \$5,000 match through the Thomas A. Haas Fund of the New Hampshire Charitable Foundation (Piscataqua Region) at each of our fall and spring fundraisers. These very generous donations have a huge impact on the important work we do supporting families and educating children in our community.



Deb Cuddahy (current Executive Director), Thomas Haas, Cellissa Hoyt (former Executive Director) and Jessica Starkey (Board President).

We treasure the relationships we have with the Wheelers, Tom Haas, and the many community members who support staff and early education programming at Growing Places.

Our highly gifted staff and amazing board members are the true pillars of our organization. Just recently our staff and board displayed an ultimate level of

dedication and expertise as they guided us through one of our biggest changes we have had at Growing Places.

After 25 plus years as our Executive Director, Cellissa Hoyt made a very difficult decision to move on from Growing Places. Although selfishly we didn't want to see her go, our silver lining is that she is continuing to support the field of early childhood on a much larger playing field. Cellissa's new position with the State Early Learning Alliance has the ability to impact (continued on next page)



Board: Jessica Starkey (President), Chris Regan (Treasurer), Kathryn Mone (Vice President), Amy Leone (Secretary). (Missing: Brooke Fleit)

A Nonprofit Early Education and Youth Recreation Organization
56 Pinkham Road, Lee, NH 03861 | 603.868.1335

www.growingplacesnh.org
Durham | Lee | Madbury



(cont. from front page).....

hundreds of early childhood programs through out New Hampshire. We will surely miss her enthusiasm and hard work with us but wish her the best of luck on this new adventure!

The challenge of filling Cellissa's position was not taken lightly. Hours and hours of thoughtful consideration and deliberation took place by a committee made up of staff, board, and former board members. This committee was determined to hire a candidate that held a particular skill set and was also just the right fit for our team.

We are excited to share that this very long process has paid off with the decision of hiring Deb Cuddahy. Her extensive financial knowledge, strengths with community collaboration, and vast understanding of early childhood education will continue to move us forward in many positive and exciting directions.

As we envision the future of Growing Places we plan to continue to strengthen and build upon the many impactful relationships we have both internally and externally. Our goal is to expand our intergenerational connections between the children of Growing Places and a community of all ages. We have no doubt that these dreams will come to fruition, especially with the ongoing support that this wonderful community continues to bestow upon us.



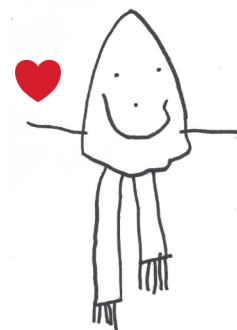
Cellissa & Deb



Picture above and to the right capture some long standing supporters who recently attended our fundraiser at the Wheelers.



From the bottom of our hearts we thank each and every one of our of Growing Places supporters!



Picture created by Elizabeth (Woodside Preschool)

Beautiful Year End Celebrations



Children from both of our early childhood sites recently enjoyed fun-filled end of the year celebrations with their families. The beautiful weather at both celebrations set the stage for picture perfect evenings. Pure joy and laughter filled the air as families gathered for picnic dinners, singing, entertainment from a magician, and some pretty amazing animals! Here are a couple of pictures from these spectacular nights including an amazing cake replica of our raised garden created by parent and owner of Sweetened Memories, Kathy Shuttuck.

To see more pictures visit our facebook page.



Growing Places' "Super Star" Classroom Volunteers

It is always an exciting day at Woodside when the children know it is a "Super Star" Mrs. Lilly day. Mrs. Lilly has been sharing her love of reading with the children at Growing Places Woodside for over four years. Her warm and gentle demeanor set the stage for a relaxing yet engaging story time. Her patience allows the children time for great reflection and conversation with each and every book they share. Thank you Mrs. Lilly!



"Super Star" Cathy (pictured on the left) has been teaching sign language to the children at Pinkham Road once a week since September.

The children were delighted to learn new signs each week, incorporating many of them into classroom games. This year they even learned a new song and shared it at their recent end of the school year celebration ("The More We Get Together").

When reflecting on the time they have spent with Cathy, a funny and favorite memory came to mind. One day before Cathy arrived for a visit the children thought it would be great fun to hide and sign "SURPRISE" when she found them! Both the children and Cathy found delight with this surprise and shared a great laugh.

Back for a second annual science visit were the "Super Star" students from Oyster River Middle School (including three Growing Places alumni). This group was led by Growing Places parent and Oyster River Middle School 8th grade science teacher, Mrs. Martin.

The students shared several hands on and interactive experiments with the children. This year they concluded with a rocket bottle launch that provoked lots of excitement from their captive audience.



Say It Isn't So

June 21st was filled with emotion as staff gathered to celebrate two long-time extremely talented, dedicated and giving staff members of Growing Places. Kim and Kate are both embarking on new adventures starting this summer and fall (respectively).

Kim devoted over 11 years to Growing Places. The first part of her time with us was as an enriching teacher, touching the lives of so many children and families. During her last three years at Growing Places she was a fearless leader providing strength and guidance as a Program Director at our Lee location. We are already missing her smile and presence and wish her the best of luck in her retirement!

Kate has quite literally grown up at Growing Places, starting as a teacher aide while attending UNH over 29 years ago. Throughout the years, she has held many roles in various classrooms and administration. The void without her will be a large one to fill but we are thrilled and excited for her as she continues to support the field of early childhood through her work with TimberNook.

Kim and Kate have had such an important impact on who we are as an organization and team and we can't even begin to thank them for the contributions they have shared over so many years.



Kim Snow & Kate Milne

Upcoming Events & Announcements:

- Summer Camp Cowabunga and TimberNook are under way...we still have a couple of spots open during select weeks if your child wants to join in our summer time fun. Please call the main office at 603.868.1335 for more information.
- Registration is now OPEN for our before (7-8:45) and after school (3:00-6:00) programs for FALL 2017 at Moharimet Elementary School. Limited spaces are left. Contact Francesca Trial at 868.1335 or moharimet@growingplacesnh.org for more information. First day of programming is Wednesday, August 30th.
- First day of Fall programming for our early childhood sites (Lee & Durham) is Monday, August 28.
- Woodside early education location is opening a classroom this Fall for 2-3 year olds. Contact Hillary for more information 868.5674.
- Mark your calendars....Growing Places annual Family Fun Day at Coppal House Farm corn maze is set for Sun, October 22!

THE FUTURE BELONGS TO
THE CURIOUS.
 THE ONES WHO ARE
 NOT AFRAID TO TRY IT,
EXPLORE IT,
POKE AT IT,
QUESTION IT
 AND TURN IT INSIDE OUT.



A HUGE thanks to our amazing Corporate Sponsors!

“It is literally true that you can succeed best and quickest by helping others succeed” ~ Napoleon Hill

To learn more about this powerful partnership please contact Wendy at 868.1335.



Bamford, Dedopoulos & Regan, PLLC
 68 Main Street
 Durham, NH
 (603)868.2414

